



# ARA

Alibrandi Realty Associates

## NORTHWOOD EXECUTIVE PARK

76 TREBLE COVE ROAD, NORTH BILLERICA, MA 01862

# Building 2

4,250SF

Office/R&D Space for Lease

Excellent corporate headquarters location.  
Professionally manicured grounds and pond.

### AVAILABLE SPACE:

**Space:** 4,250 SF

**Availability:** Immediate

**Asking Rate:** Negotiable

### BUILDING SPECIFICATIONS:

**Building Size:** 17,400 SF on 1 floor

**Construction:** 1981

**Building Type:** Split face block/steel

**Clear Height:** 12'

**Roof:** Rubber membrane

**Loading:** 1 drive-in bay

**Power:** 400 amps, 120/208 volts

**Heat/AC:** RTU-gas

**Parking:** Ratio of 3.66 spaces/1,000SF

**Real Estate Taxes:** \$0.80/SF

**Operating Expenses:** \$1.40/SF

For leasing opportunities contact Jim Alibrandi:  
jalibrandi@alibrandirealty.com, 978.947.8200

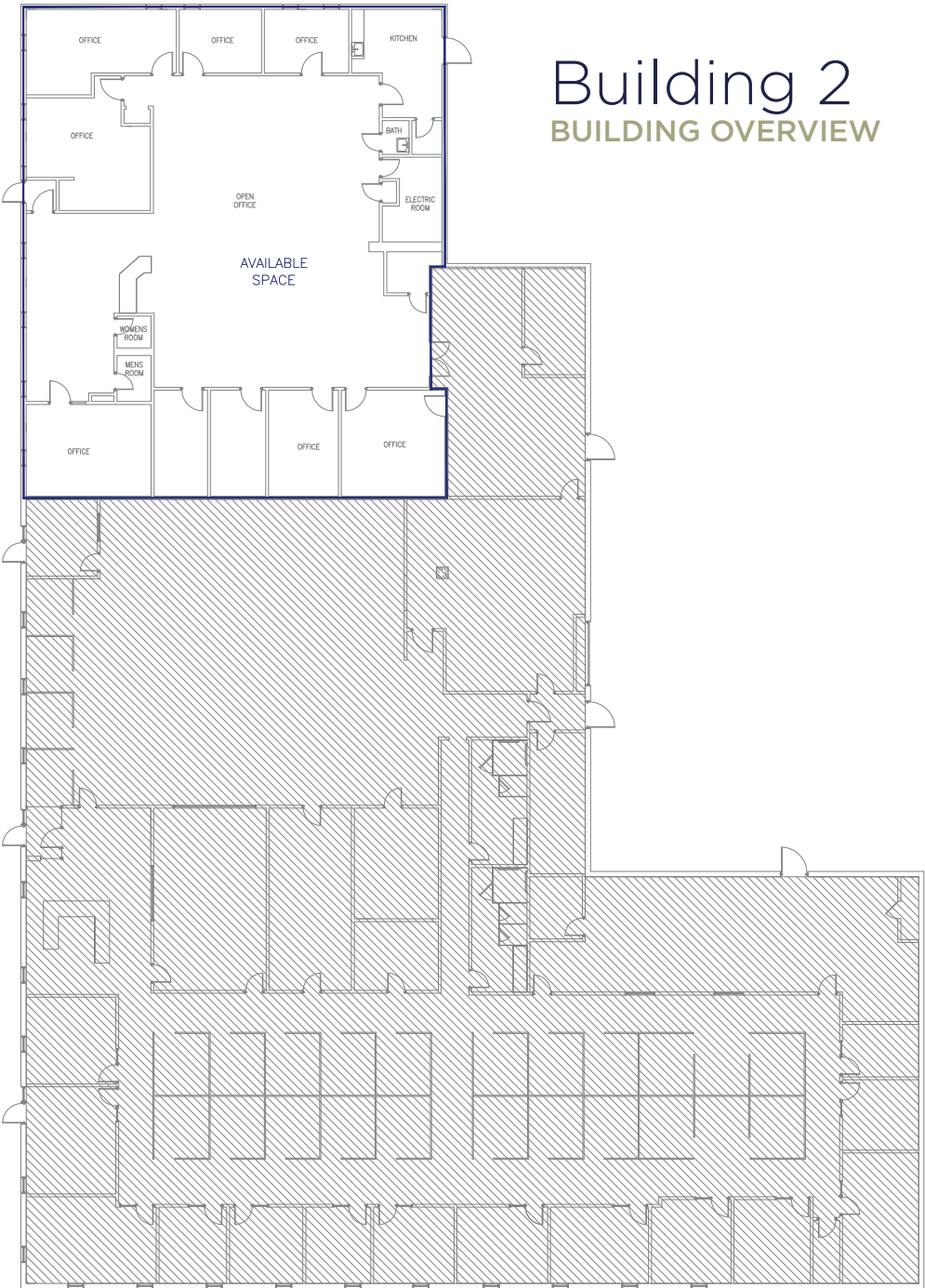




**NORTHWOOD EXECUTIVE PARK**  
76 TREBLE COVE ROAD, NORTH BILLERICA, MA 01862

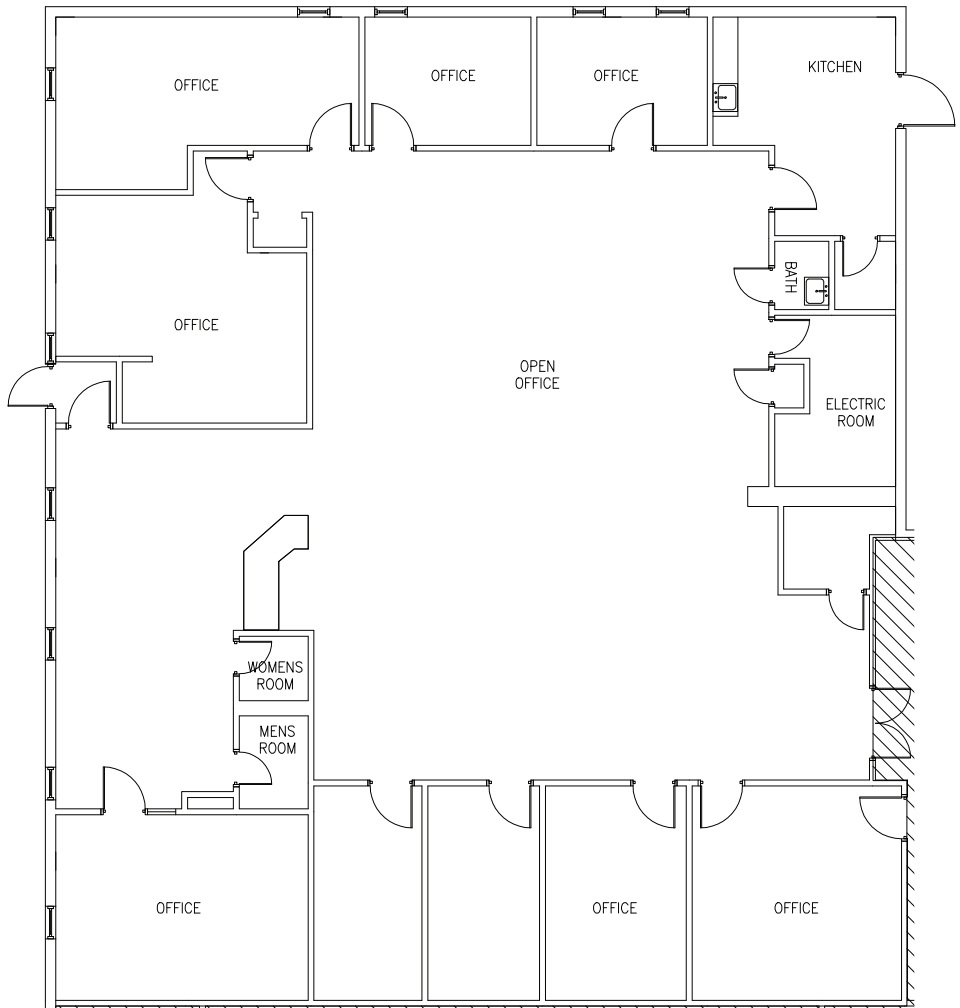
# Building 2

## BUILDING OVERVIEW





**NORTHWOOD EXECUTIVE PARK**  
76 TREBLE COVE ROAD, NORTH BILLERICA, MA 01862



**Building 2**  
AVAILABLE SPACE

